

GALVI HYDRAULIC UNIT EMEHYD[®] FOR CALIPERS PE AND SLDU

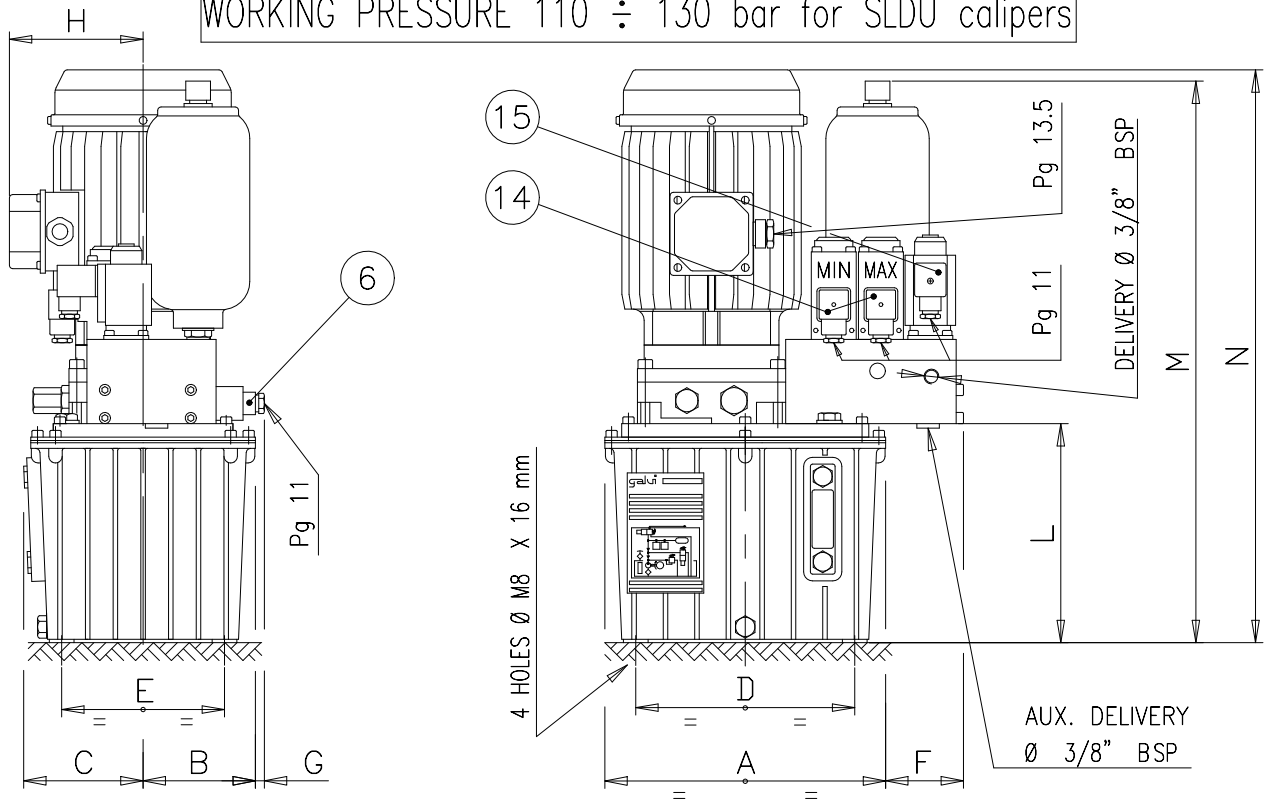


EMEHYD - TECHNICAL DATA SHEET

EMEHYD-01

GALVI EMEHYD[®] power packs are specifically designed to operate PE and SLDU emergency Calipers. The physical dimensions of these Units are compact and also provide the advantage of installation remote from the Caliper. One EMEHYD[®] power pack can operate two or more Calipers, thus offering substantial saving in initial and running costs. Power packs, fitted with accumulator will, apart from reduced running cost facilitate the opening of one or more Calipers for a prolonged time without the motor running.

WORKING PRESSURE 145 ÷ 170 bar for PE calipers
WORKING PRESSURE 110 ÷ 130 bar for SLDU calipers

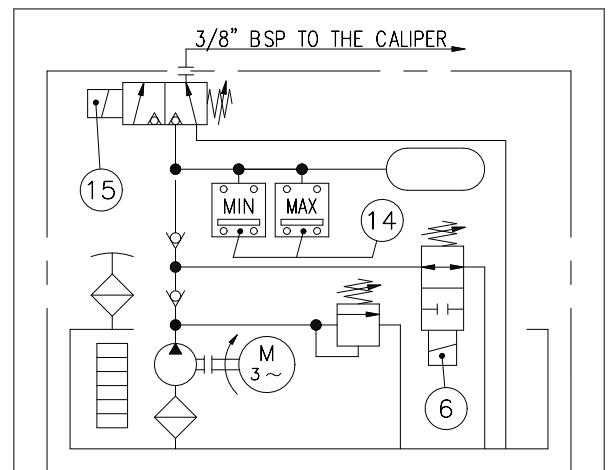


⑥ ELECTROMAGNETIC VALVE: Protection IP 65
12 V DC; 24 V DC; 24 V AC; 110 V AC; 230 V AC
Max Power Consumption 35 W ED 100%

⑭ 2 ADJUSTABLE PRESSURE SWITCH: Protection IP 65
Maximum contact load AC up to 250 V: 5 A
Maximum contact load DC up to 250 V: 0.25 A

| Switching capacity | 125 AC | 250 AC | 30 DC | 250 DC |
|--------------------|--------|--------|-------|--------|
| Resistive load (A) | 7 | 5 | 5 | 0.2 |
| Inductive load (A) | 4 | 2 | 3 | 0.02 |

⑮ ELECTROMAGNETIC VALVE: Protection IP 65
12 V DC; 24 V DC; 24 V AC; 110 V AC; 230 V AC
Max Power Consumption 38 W ED 100%



| POWER PACK TYPE | MOTOR IP.55 4 poles (kW) | RESERVOIR CAPACITY (cm ³) | ACCUMULATOR CAPACITY RATED (cm ³) | ACCUMULATOR CAPACITY USEFUL (cm ³) | CALIPERS OPERATED SIMULTANEOUSLY | | | | | | MASS WITHOUT OIL (kg) | | | | | | | | | | | |
|-----------------|--------------------------|---------------------------------------|---|--|----------------------------------|---|---|---|------|-----|-----------------------|-----|-----|-----|-----|----|---|-----|-----|-----|-----|----|
| | | | | | PE | | | | SLDU | | | A | B | C | D | E | F | G | H | L | M | N |
| | | | | | 1 | 2 | 3 | 4 | 030 | 060 | | | | | | | | | | | | |
| EMEHYD-5552 | 0.75 | 10000 | 1000 | 103 | 1 | - | - | - | 4 | 2 | 280 | 100 | 106 | 210 | 130 | 44 | 8 | 115 | 197 | 479 | 500 | 24 |
| EMEHYD-6552 | 0.75 | 10000 | 1400 | 139 | 2 | 1 | - | - | 5 | - | 280 | 100 | 106 | 210 | 130 | 44 | 8 | 115 | 197 | 546 | 500 | 25 |
| EMEHYD-6863 | 1.50 | 10000 | 1400 | 139 | 3 | 2 | 1 | - | 6 | 3 | 340 | 124 | 130 | 250 | 170 | 30 | - | 140 | 239 | 588 | 600 | 32 |